

خدمات الإنشاءات في القطاع غير المنظم
في الأراضي الفلسطينية: الواقع و الآفاق

معهد أبحاث السياسات الاقتصادية الفلسطيني (ماس)



M A S



()

:

2006

()

1994

()

✧

✧

✧

✧

✧

✧

() () () () () ()



()

2006 ©

2426 . . 19111 . .

info@mas.org.ps : 2987055 : 2987053/4 :

<http://www.mas.org.ps> :



()

:

2006

i

()

.2003

:

-

:

:

:

:

()

()

()

:

:

()

2006

()©



1		-1
7		-2
7	1-2	
9	2-2	
13		-3
13	1-3	
14	2-3	
14	3-3	
16	4-3	
17	5-3	
19		-4
19	1-4	
21	2-4	
23	3-4	
25		-5
26	1-5	
27	2-5	
29	3-5	
32	4-5	
37		-6
41		-7
41	1-7	

41		1-1-7
43		2-1-7
43		3-1-7
43		2-7
44		3-7
45	2000 7	4-7
47		-8
47		1-8
47		1-1-8
48		2-1-8
49		2-8
49		1-2-8
49		2-2-8
50		3-2-8
50		4-2-8
51		5-2-8
51		6-2-8
51		7-2-8
53		

26	:1
27	:2
28	:3
29	:4
31	:5
32	:6
	:7
35	
	:8
36	
	:9
38	
38	:10

9)	2005 -1999 (:1
10	- 1999)	2005	:2
15		(2004	:3
16		2004-2003	:4
17	2004 2003		:5
21		2003	:6
22		2003	:7
23		2003	:8

:

: ✧

.

: ✧

:

.

.

.

.

%10
2005
%72 2003
(2006)

2005
) 2005
3996 %36.5
2427 %34.6
(

(90)

1

.2003

2

- -

.

.

:

.

.1

.

.2

.

.3

.

.4

.

.5

.

.6

.

.7

.

.8

.

-

.9

(61086)

(6168)

2003

)

(12720)

-

(

-

:

5

:

:()

.()

- -

2003

:

1-2

1972

%10

%14

(2006) 1990

1993

1999

1996

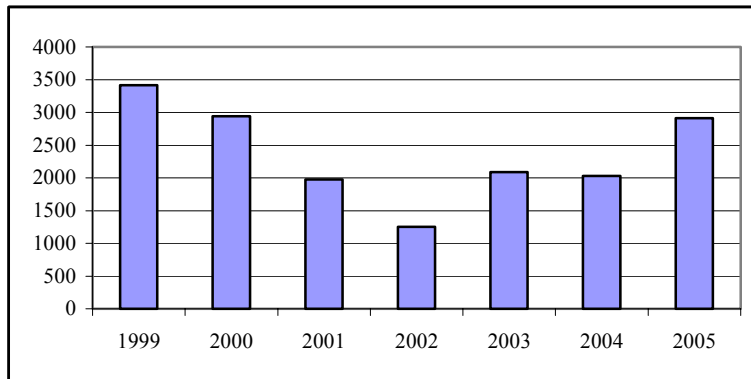
2000

2002		2002	%2
.2004	%4.8		
	.(2004)
	.		
	-		-
		.1993	
	2.5		
		.2000 - 1993	
	(1.1)		
2.4			.2002
		.2005	
		()
) 2002		1.3	2.9
			.(1
1469	2005	%108.1	
		.2004	706
		-	-
) .	
			.(

:1

2005 -1999 ()

()



2-2

.(2006) %23

%26

2003 %9

%13

(2005)

2005

:
 :
 :
 :

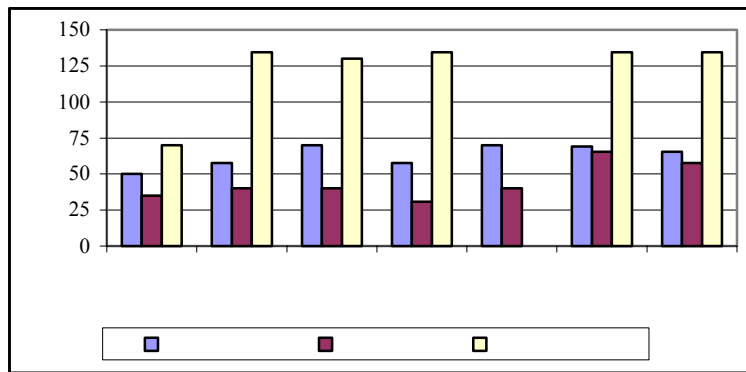
68 2004

) 5700
 .(2004
 2005

40 70
) . 130
 .(2) .(2005

:2

2005



.2005

2006

:

:

.1

.2

.3

.4

.5

1-3

2004
%75.2
318 (%37.9) 587
269
.(%127)
2003

2003
2004 1997
2004
- -
5662 %53.3
.(%53.8) (%52.7)

9.6 2003 11
.2004

2-3

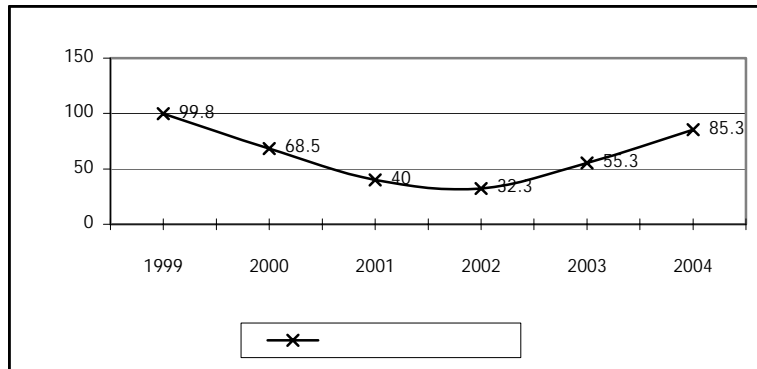
2004			
2003	2004	%37.6	
%38			219.5
%18		%24	
		.%49	
	2004	%28.7	
		.	134.1
%39		%41	%86
			%.19

3-3

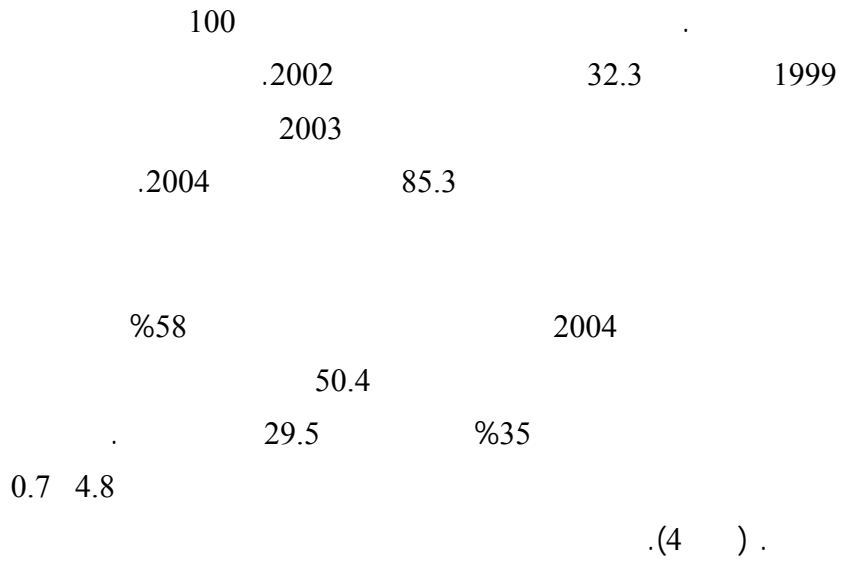
2004			
	85.3	%69.9	2003
46.5			
)		38.8	(%86.5
)(%53.4
) .2003	%4.1	2004	%5
			.(3

:3

(2004 - 1999)

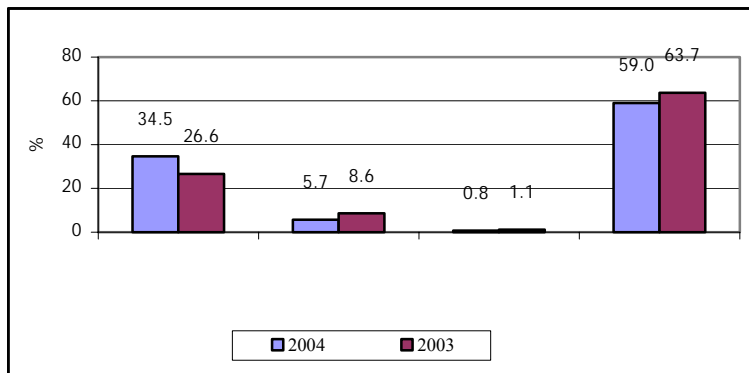


(3)



:4

2004-2003



.2004

:

4-3

. 1.5 %14.1
 4.8 %1
 . 3.3 %4 2004
 2004 531.2
 - - 13.2
 .2003 %17 2004
 . 1.14 %19.3
 2004
 %25.5

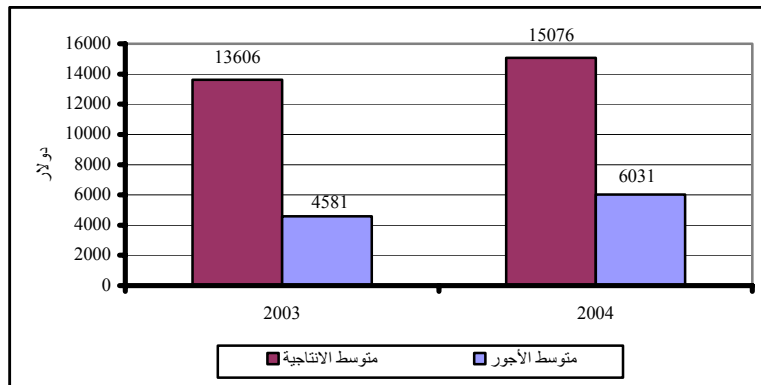
2003 2004 %5.9
 %6.7 2.18

5-3

2004
 15076.1 %10.8 2004
 %17.3
 6030.6 %31.7 - - %0.5
 %33 %40 (5)
 %63.6
 - - %1.5

:5

2004 2003



.2004

-4

:

.

2003

1904

58

:

- -

.1

.2

.3

1-4

%93

2

%82

%86.4

%61.6 (2003)

%66

%82.3

%65.4 .³

%74.6

%97.7

.(6) .

%96.2

%90.8

%5.8

%3.5

%84

(%75)

(%11.5)

(%9.6)

2

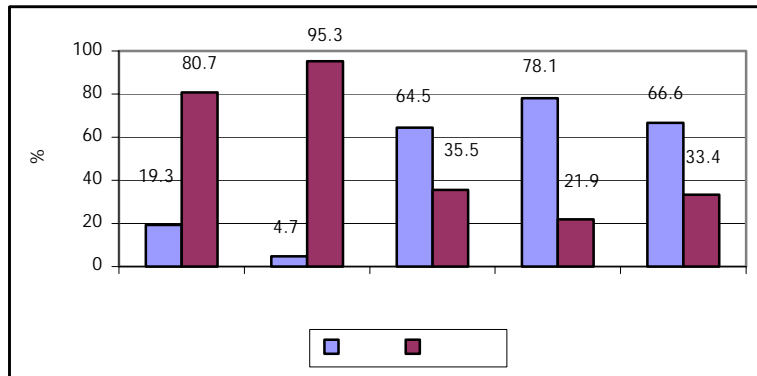
3

%92.6

2003

:6

2003



.2003

2-4

%57.1

%37.4

(%5.5)

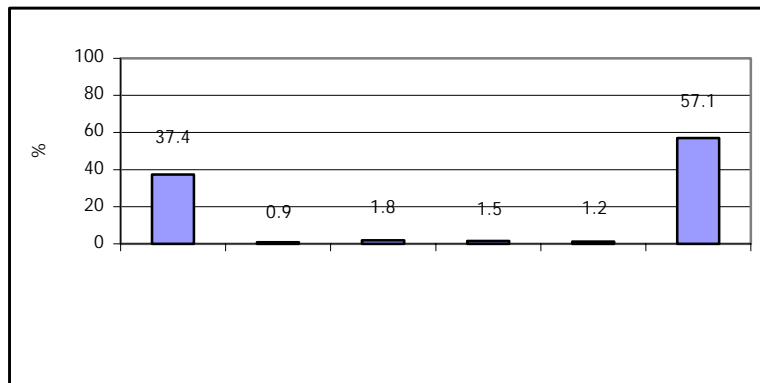
.
%63.5

%25.1

.(7) .

:7

2003



.2003

%53.1

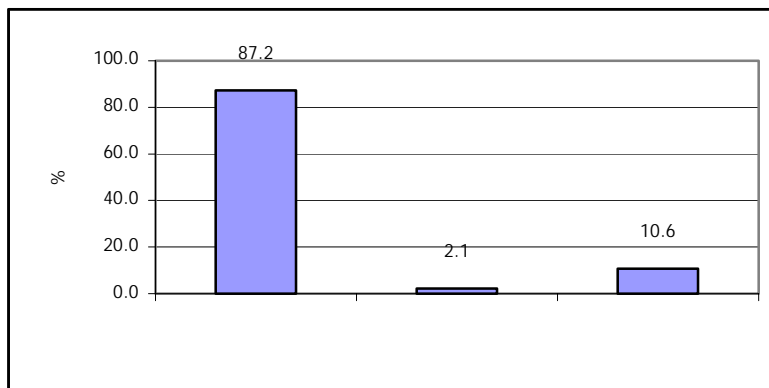
%11

%35.9

(%10.6) .(8) . %87.2 (2003) (%2.1)

:8

2003



.2003

:

()

◇

◇

◇

◇

◇

◇

◇

.1

.2
.3
.4

1-5

(90)

%99.7

30-20 (%29.2)
(%38.2) 40-30
(%5.6) (%27) 60 -50 50-40

%92

60

) .

.(1

(%7.8) (%92.2)

:1

%29.2	30 - 20
%38.2	40 - 30
%27	50 - 40
%5.6	60 - 50
%	60

(%95.4) 8
 (%4.6) 8
 2003
 39
 6.5
 (%51.7)
 300 – 250
 250 – 200
 100 %21.8
 .(2) (%3.4)

:2

%3.4	100
%11.5	150 – 100
%11.5	200 – 150
%21.8	250 – 200
%51.7	300 – 250

%16.7
 %23.8 75 - 50
 125 - 100

.(3)

:3

%10.7	50
%16.7	75 - 50
%32.1	100 - 75
%23.8	125 - 100
%16.7	150 - 125

2003

()

79

122 39.4

74)

(83.6)

(

3-5

(%40)

(%40)

(%13.3)

(4) (%6.7)

:4

%40	
%40	
%13.3	
%6.7	

%82.8

%40

(%21.2)

(%24.8) (27)

(%11.9)

(%5)

(%56.2)

(%43.8)

(%87)

(%13)

(.5)

%74.4

%25.6

%60

%40

:5

%87	
%13	

%28.9 (2003)

%32.6

(%61.5)
(%28.2)
(.6) .

:6

%28.2	.
%61.5	.
%10.3	.

(%77.2)
(%21.6)

(%44.9) : (%55.1)

.1
.2

.3

.4

.5

.6

.7

.8

.9

.10

()

()

:

:

:

()

(%26.9)

(%19.2)

- - (%11.5)

%5

-

-

.(7) .

:7

%2.6	
%5.1	
%11.5	
%14.1	
%19.2	
%20.5	
%26.9	

:

.1

.2

.3

(8)

:8

%19.5	1192	
%51.5	3133	
%2.8	171	
%7.4	450	
%4	242	
%2.2	135	
%1	64	
%1.3	77	
%6.1	372	
%4.2	254	
%100	6090	

2006

:

%50

(8)

()

:

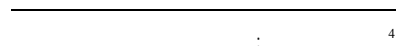
4 (9) .
.2012 – 2003

400

138

55.2

37



4

:9

52.78	1.89	4	20.7	26.2	2006
52.29	1.89	4	19.6	26.8	2007
56	1.89	4	21.8	28.3	2008
56.09	1.89	4	20.7	29.5	2009
57.19	1.89	4	20.7	30.6	2010
56.29	1.89	4	18.5	31.9	2011
56.49	1.89	4	17.4	33.2	2012

.2006 () 2002 :

.(10) 2012 – 2003

:10

()	()	(⁵)	
128.9	2913.46	7.28	2006
127.7	2886.41	7.22	2007
136.8	3091.20	7.73	2008
137	3096.17	7.74	2009
139.7	3156.89	7.89	2010
137.5	3107.21	7.77	2011
138	3118.25	7.80	2012

2006 () :

.2002

5

-7

1-7

:

1-1-7

37

41

:

.

.

:

:

.

.1

.

.2

.

.3

.

.4

.

.5

.

.

()

.

.

2-1-7

3-1-7

2-7

.1

.2

.3

3-7

1996

:

.1

.2

.3

.4

.5

.6

2000 7

4-7

.2000 7

-
-

1-8

1-1-8

48 2003

2004

- -
:

4

◇
◇
◇

- -

:

()

2-1-8

.6151 98 87

- -

:

			:87	◇ ⁶
		1948	9	
			:98	◇
		1949	1	
			:151	◇
1978	27			

2-8

:

1-2-8

2-2-8

3-2-8

4-2-8

5-2-8

6-2-8

7-2-8

.2004
.2005
.2004
.2005
.2002
()
.2002 2000 7
.2002

:(1)

.....:	.1
.....:	.2
□ □ □ :	.3
.....:	.4
□ □ □ :	.5
□ □ □	
.....:	.6
.....:	.7
.....:	.8
□ □	.9
	.10
□ □ □	
	.11
□ □ □	
	.12
□ □ □	
()	.13

.....
.....

.14

() .15

.....
.....

.16

.....
.....

.17

() .18

.....
.....

.19

.....
.....

.20

.....
.....