



سلطة النقد الفلسطينية



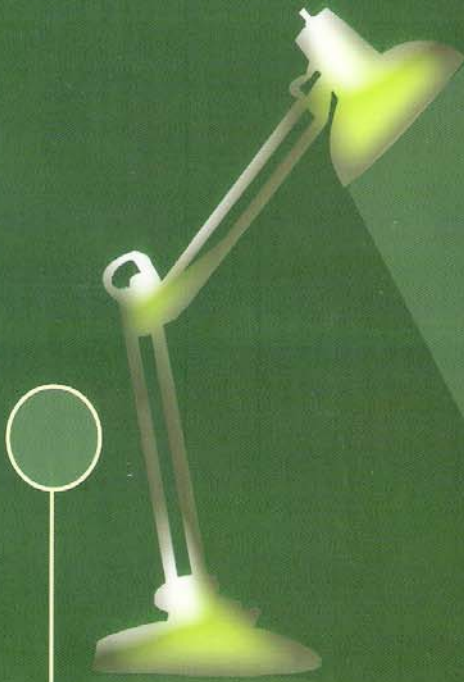
الجهاز المركزي للإحصاء الفلسطيني



معهد أبحاث السياسات الاقتصادية الفلسطينية  
(ماس)

# الاقتصادي والاجتماعي

# المراقب



العدد (5)  
أيار 2006

:

( ) .

:

:( )

( )

:

( )

:

( )

( )

2006 ©

2426 . 19111 . .

+972-2-2987053/4 :

+972-2-2987055 :

[info@mas.org.ps](mailto:info@mas.org.ps) :

2006 ©

1647 .

+972-2-2406340 :

+972-2-2406343 :

[diwan@pcbs.gov.ps](mailto:diwan@pcbs.gov.ps) :

2006 ©

452 : .

+972-2-2409920 :

+972-2-2409922 :

[info@pma.gov.ps](mailto:info@pma.gov.ps) :

( )

(CFG)

2006





<b>1</b>		<b>-1</b>
<b>2</b>		<b>-2</b>
3		1-2
3		2-2
<b>3</b>		<b>-3</b>
4		1-3
4		2-3
5		3-3
5		4-3
6		5-3
6		6-3
<b>7</b>		<b>-4</b>
<b>8</b>		<b>-5</b>
8		1-5
8		2-5
8		3-5
9		4-5
<b>10</b>		<b>-6</b>
10		1-6
11		2-6
12		3-6
<b>13</b>		<b>-7</b>
<b>14</b>		<b>-8</b>
<b>17</b>		<b>-9</b>
<b>18</b>		<b>-10</b>
18	2005	1-10

19		2-10
19		3-10
20		4-10
21		5-10
22		6-10
23		7-10
23		8-10
<b>25</b>		<b>-11</b>
25		1-11
26		2-11
27		3-11
<b>28</b>		<b>-12</b>
28		1-12
29		2-12
31	/	3-12
31		4-12
<b>32</b>		<b>-13</b>
32		1-13
33		2-13
33		3-13
35		4-13
35		5-13
36		6-13
38		7-13
38		8-13
40		9-13
40		<i>1-9-13</i>
41	( )	<i>2-9-13</i>
41		10-13
<b>44</b>		<b>-14</b>
<b>46</b>		<b>-15</b>
48		1-15
49		2-15

<b>51</b>		<b>-16</b>
<b>52</b>		<b>-17</b>
52		1-17
56		2-17
57		3-17
<b>58</b>		<b>-18</b>
59		1-18
<b>60</b>		<b>-19</b>
60		1-19
61		2-19
62		3-19
62		4-19
63		5-19
<b>65</b>		<b>-20</b>
65		1-20
66	" "	2-20
<b>67</b>		<b>-21</b>
69		1-21
69		2-21
71		3-21

10		2004 2003	:1
	/2004		:2
16		2005	:3
16		2005 /2004	:4
16		2005 /2004	:5
	*		:5
17		2005 /2004	:6
23		2006	:7
23		2006	:8
24		2006	:9
24		2006	:10
25		2006	:11
26		2005 2004 2000	:12
27	(2005 - 2003)		:13
29		2005 2004	:14
30		2005 2004	:15
31		2005	:16
32			:17
34		2005 -2004	:18
37		(2005-2004)	:19
38		(2005-2000)	:20
39		(2005-2000)	:21
41	(05/4 - 04/4 )		:22
42		2006-3-7	:23
43		2006/3/7	:24
44		2006/3/7	:25
			:26
48		2005	

49			:27		
50		2005	:28		
51	2006		:29		
53		2006/2005-1995/1994	:30		
55			:31		
56		2005	:32		
57		2005	:33		
58		2005	:34		
59	(	) 2004	(	)	:35
59		2004	:36		
60		2005	:37		
61		2005	:38		
61			2005/2004	:39	
				:40	
62			2005		
66				:41	
68		2005		:42	
				:43	
68			2005		
69			2005-2004	:44	
69	2005			:45	
71		2005-2004		:46	

1	1997	:		:1
				:2
2			2005	
				:3
7			2004 2003	
	(	)		:4
9			2004	
				:5
12			2004	
				:6
12			2004	
13		2005		:7
14				:8
18	.2005	2004		:9
21			2005	:10
22		2005		:11
22	2005			:12
27		2005		:13
				:14
28			2005	
29		2005		:15
30		2005		:16
33	05/4	- 04/4	/	:17
34				:18
35	05/4	- 04/4		:19
36			05/4 - 04/4	:20
36				:21
40				:22
45		2005	2006	:23
				:24
47			2005 -2004	
49				:25
53				:26
54			2006/2005	:27
55			2006/2005-1997/1996	:28

.1967

15

1,000 ( )

2004

( 64-15 15 ) :  
100 ( 65  
. 1000 :  
. 1000 :

%0.2 2005 :  
 %37.5 1149.5  
 323 %1  
 %35.5 2004 2060.6 :  
 1.5 2004 .2003  
 1000 2004 :  
 %36.8 59 %2  
 %30 %60  
 2004 %49 :  
 %34.3 %63.5 %29.9  
 %26.3 2004 :  
 %3 .2003 %26.2  
 .2005 77 :  
 72 %2.3  
 %26.1 :  
 27.3 287 2005 .  
 6.8  
 .2005 2004 %40.7 %40.3 :  
 %23.5 %26.8 %13.4 %13.5  
 871 %30 2006  
 2004 %68.5 2005 :  
 406.9 %20.2 2200  
 166 %18.6  
 %47.1 2005 :  
 %11.4  
 %2.2 / :  
 1791.8 %0.4  
 %6.2 %1.4

2006 4.68 :  
%1.15 %1.57 .2005 4.65

2006 :  
%46.3 %38.7  
%2.48 %2.83  
%0.07 %0.42

:  
%42.8

2006/2005 1.08 :  
10 %4.5 %3.3

%75.6 4281 :  
%41 26902

.2005 287 :

8800 :  
115 350 2005

%58.3 2005

%27.2 2005 :

%.65.1

2005	2005	2005	2005	2004	2003	2002	2001	
1149.5	1152.0	1078.9	1076.0	4131.2	4010.8	4169.3	4325.7	( ) -
323.0	326.4	308.5	310.3	1217.8	1184.8	1203.4	1311.2	( )
					4128.1	4284.8	4371.8	.( )
					1126.3	727.2	1186.2	.( )
					1127.2	1222.9	1326.1	.( )
				-1843	-2487.1	-2050.1	-2550.3	**.( )
				2292	2929.9	2615.1	3155.5	.
				449	442.8	565	605.2	.
					4372.5	4570.7	4817.4	.( )
					1291.6	1319.3	1460.3	-( )
632	657	656	586	604	590.7	487.1	508.1	.( )
572	591	589	526	550	533.4	436.9	438.5	.( )
60	66	66	60	54	57.3	50.2	69.6	.( )
40.3	41.7	41.2	39.7	40.5	40.4	38.1	38.7	.(%)
23.8	22.7	21.2	26.3	26.8	25.6	31.3	25.5	- (%)
2.41	0.4	-0.45	1.9	3	4.4	5.7	1.23	- (%)
			67	61	72	60	44	.(%)
402.74	273.83	342.6	252.4	947.3	676.24	392.34	1092	.*( )
521.0	467.6	498.9	379	1511.59	1156.86	1082.7	1254	.*( )
-118.26	-193.78	-156.3	-126.6	-564.29	-480.62	-690.63	-966.9	*( ) ( )
75.14	72.93	-2.22	0.0	-22.01	42.8	-171.66	-162	*( ) ( )
					1045.5	966.1	1045.8	.( )
			1257	1257	914.07	887.24	839.72	.( )
4612.5	4605.8	4114.4	3992.54	3957.76	3624.39	3430.1	3398.81	.( )
1791.8	1798.4	1673.2	1584.59	1420.33	1065.70	950.25	1220.56	.( )

(2004-2002)

(2001-95)

\*

\*\*

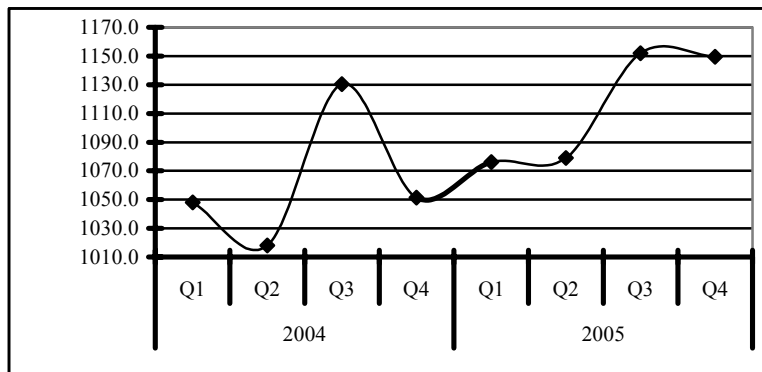


2005  
%0.2

1,149.5 2005  
(1 ) .%37.5

:1

1997 :

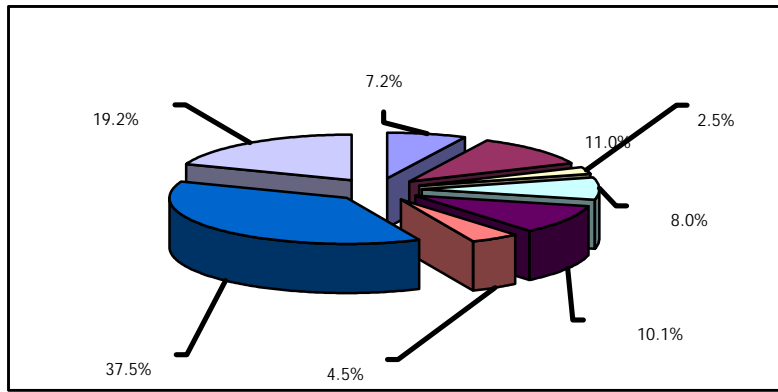


%11.0  
%8.0 %8.3  
%37.5  
%19.2  
%4.5  
%7.2  
%10.1  
%12.0  
%2.5 %2.6  
.%37.7  
%4.2  
(2 ) .%9.7

2005

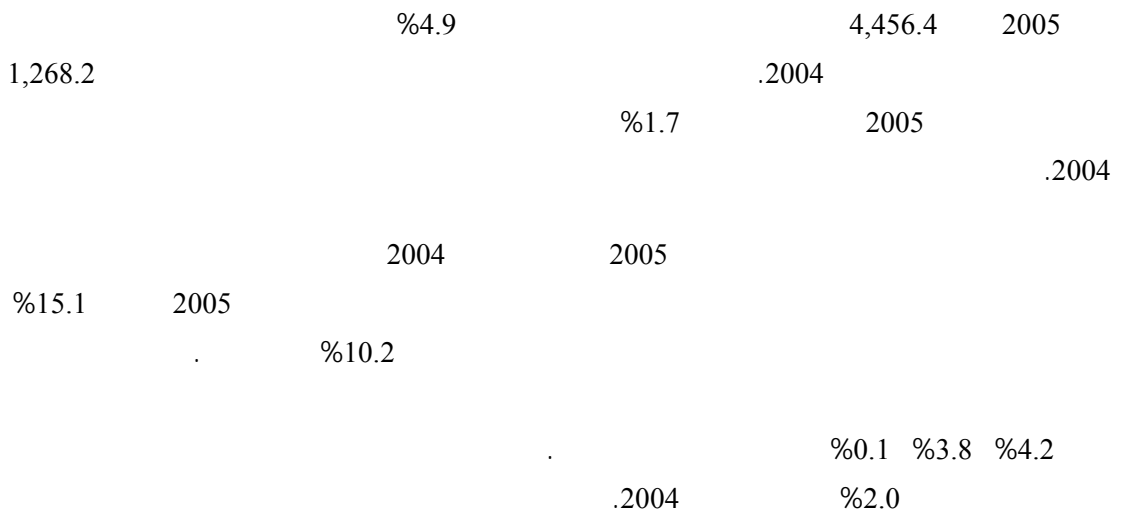
%4.0  
%12.6  
%8.5  
%3.0  
%3.1  
%0.8 %1.9  
%1.0 2005  
323.0

2005



(2005 )

2005



-2

( ) 2004



**1-2**

( 2270 ) 2004 2,373.2  
 105 2003 %31.8  
 %33.5 %73.6  
 625.4 ( )  
 205.1 %42.3 65.0  
 55.9  
 .2003 %30.3  
 %52.7 ( 75 ) 94.0  
 %30.9 %43.6  
 %20.2 ) %7.1 %17.6 %151.8  
 .2003 (

**2-2**

%11.8 ( 947 ) 2004 312.7  
 %89.9 .2003  
 7 2003 %9.8  
 %23.5 19.4  
 %61.5 11.9  
 . 1.7  
 ( 65 ) 92.6  
 %63.8 2003 %26.6  
 %18.2 ( )  
 %10.6 %159.9 %32.6  
 .2003

**-3**

2003

2001

2004

.2002

2004 ( )  
:(2004 )

**1-3**

( )

)

%9.8

2004 12690 1000  
(%29.3) (%70.7) (  
.2003 (%0.8)

700

380

**2-3**

1206 ( )

980

4686

%74

)

%14.5

.2004 59.0 %2.0

230 ( )

43.7

( )

%17.4

(%10.7

%19.6

%11.8

**3-3**

2004  
.2003 %36.8 652.6  
%47.7 %33

.2003

%283

%92.4 %98.6

%35

%.31

.2003

(%21.0)

2003

(%13.8)

**4-3**

2004 31.69 2003 8.93  
6.86 0.41  
8.52 .2004 2003 24.82  
( 33.42 2004 )  
.2003 38

159.2 .2004

33.4 102

15.8

.2003 10.4

.2004 5.2 12.9

( )

%60 142.1

(%87.3) (%89.2)

%30 17.1 .2003

( )

%19.6 4198.5 %16.1

%2

%8.2 3275.4 %37.7

4628.6

%30.4 %15.7 %27

11065

%.39.6 %2 %27



%10.8      2004  
 %0.5      %17.3      .      15076.1  
 6030.6      %31.7      .  
                  %33      %40      (3      )  
                  .      %1.5      %63.6

**-5**

:

.2003      2004

**1-5**

(17763)      2004  
                  .      %35.5      %64.5  
                  %49.0      (      )  
                  .%75.7      %37.4  
 )      %31.9      (  
 .(      )      %9.4

**2-5**

58627 (      )      2004  
                  (%42.9)      (%57.1)  
                  .%63.5      %29.9  
 %29.2  
 %25.1      (      )  
 .%13.8      %14.8      %17.5

**3-5**

285.9      %34.3      2004      (      )  
                  .%32.5      %67.5

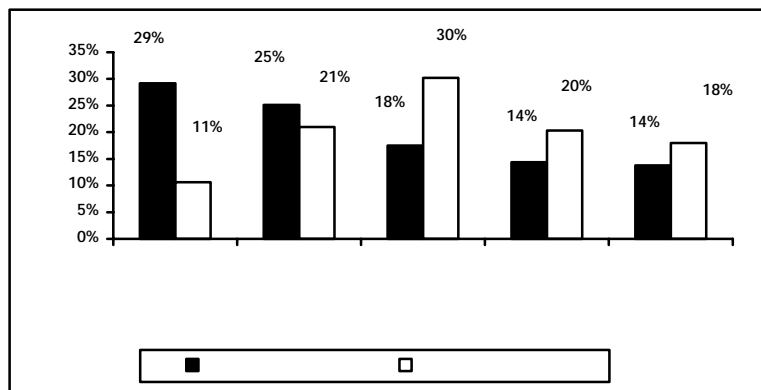
%30.5  
 %23.1  
 .( %11.5 %12.2) (%22.7)

%30.1  
 %17.3

%29.5  
 (4) .%8.6 %14.5

:4

2004 ( )



) 2006 :

.(

4-5

4877 ( ) 2004

)

9224 2004 ( )  
2945

2004

2541

4902

(1) .

2004 ( )

4419 %12.7

2004 2003

:1

( )

				( )		
	2004	2003		2004	2003	
-65.8	2540.7	7432.9	8.9	4516.3	4146.3	
-7.0	4373.0	4700.5	58.5	9223.8	5818.9	
18.0	4902.1	4155.9	-22.8	6444.7	8352.1	
45.7	3758.9	2580.4	1.7	6652.7	6540.2	
17.6	3053.9	2597.7	-22.8	2944.6	3814.4	
-4.9	3692.8	3881.1	-3.0	5766.4	5945.8	

.( )

2006

:

2004 ( )

3977

7124

3801

2004

2294

-6

.( )

:

◇

◇

◇

:2003

2004

1-6

(49491) 2004

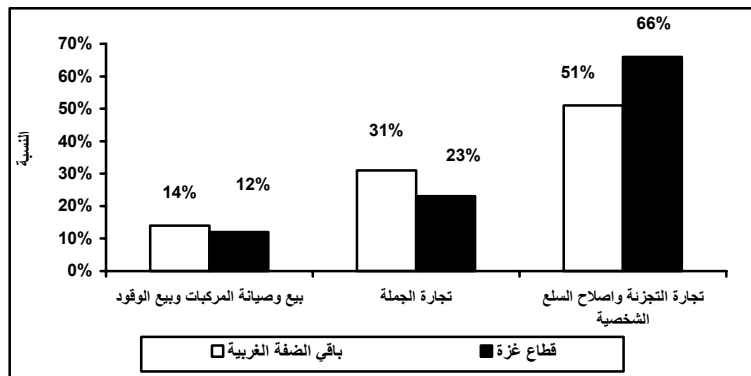
(16861) 2004

32630

%26.3						2004
				%33.8		%22.7
	1678		%41.0			
	41568		%33.6			.2004
.2004		6245	%19.3			
		(100852)	2004			
				39245		61607
	2003		%50.2		%19.9	
%78.7	%78.1					
%72.5	%71.7	2003				
					%72.8	
					%60.7	
						<b>2-6</b>
		(%26.2)		(531.5)	2004	
				2004		2003
%20.0				%73.2		
%38.8						336.9
						194.5
		%56.4				
					%3.1	
				%42.7		
		%65.6	%55.0			
(5	)			% 3.1	%12.3	

:5

2004



3-6

%3.0

5270

.2003

%56.5

19958

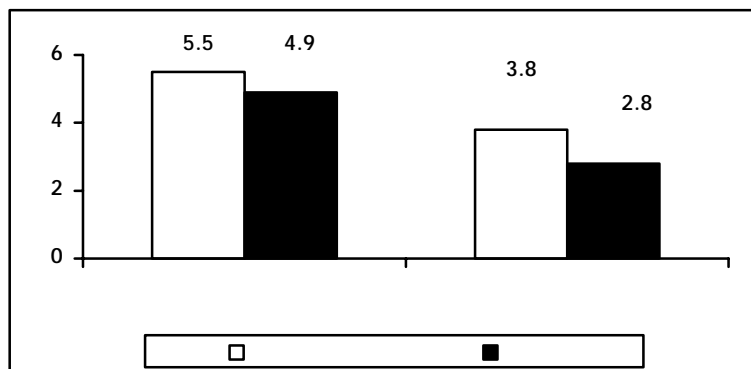
( 3965)

%78.3

%.58.9

:6

2004



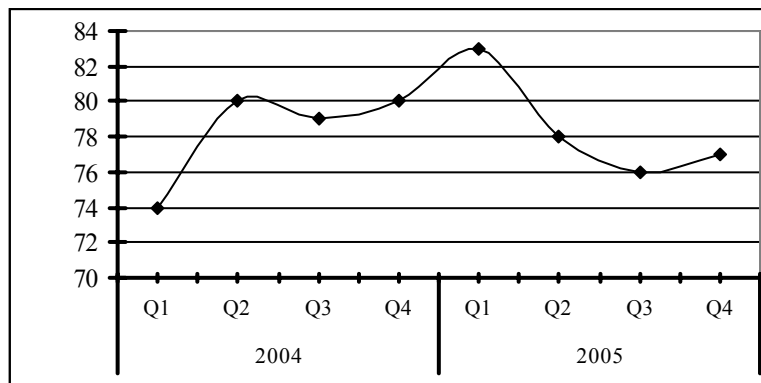
2839

3798

5129.8  
 3490.8  
 2678.1      3457.3  
 (6 ) .  
**-7**  
 2005  
 46      2005      77    76  
 260      .      13      18  
 %12.5      .      3691  
                                  %0.1  
 %2.3      34,535    2005  
                          %48.8  
                          %22.0      %22.9  
                  %2.9      %3.4  
 2005      %3.9  
 .2005      %4.5  
                  %14.5  
                  %5      %1.1  
                                  (7 ) .2005

**2005**

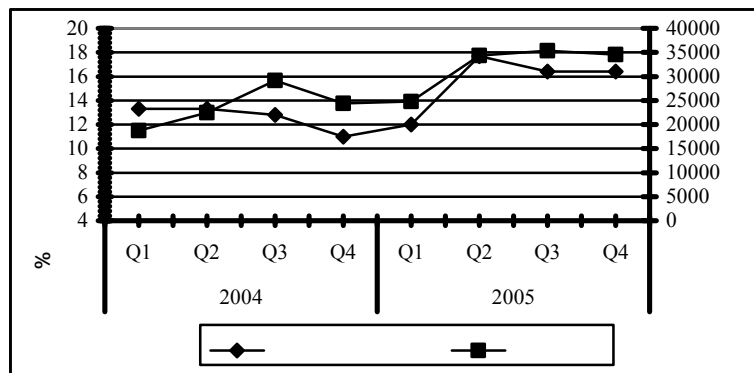
**:7**



:

2005  
 1,150 168 1,318 72  
 340 349 629  
 %0.9 2005 %11.1  
 (8) %1.7

:8



-8

2005/2004  
 2005  
 7951 2004  
 %96.3  
 %89.0  
 47.2 %11.0  
 %25.6 %95.5  
 7.9 10  
 %96.8  
 %69.5  
 %7.3 %23.2  
 (2) %81.6 %68.0

	%33.3		%66.1					
							%0.6	
			%0.3		%28.5		%71.2	
	.%3.3		%24.1		%72.6			
		(10 -1)						%58.4
(10 -1)					%56.0			
19.8					.%77.5			
			(3 ) .		8.5			
%58.9								
		.%10.8			%30.3			
			%40.4					%60.3
			(4 ) .					
		%45.5						%33.9
	.%	%17.0	%27.2					
							%40.1	
%2.6				6				
			%48.3				2.1	
	%5.6		%13.9		%32.2			
								(5 ) .
		( )						
%38.5					%45.1			
				%12.2		%30.0		
		2000						
			%26.1					
	%23.1							%50.3
%68.4								
				%4.5	%27.1			

:2

**2005 /2004**

100	23.2	7.3	69.5	
100	24.5	7.5	68.0	
100	24.1	6.2	69.7	
100	15.5	12.7	71.8	
100	29.5	7.1	63.4	
100	13.1	5.3	81.6	

.2005

-2005/2004

:3

**2005 /2004**

( )	( )									
	80	80-71	70-61	60-51	50-41	40-31	30-21	20-11	10-1	
18.6	4.1	0.9	1.3	1.8	3.2	4.4	8.3	17.6	58.4	
19.8	4.4	1.0	1.4	2.0	3.5	4.8	8.8	18.1	56.0	
24.0	5.6	1.5	1.8	2.8	4.7	6.0	10.4	18.4	48.8	
14.2	2.8	0.3	0.6	1.2	2.7	3.3	6.7	23.2	59.2	
15.9	3.6	0.3	1.0	1.1	1.9	3.6	7.0	15.3	66.2	
8.5	0.4	0.7	0.3	0.6	1.1	1.2	4.8	13.4	77.5	

-2005/2004

.2005

:4

**2005 /2004**

100	30.3	10.8	58.9	
100	30.5	9.2	60.3	
100	27.7	40.4	31.9	

-2005/2004

.2005

:5

2005 /2004

\*

		6	5	4	3	2	1	
2.1	100	2.6	2.9	7.3	14.5	32.6	40.1	
2.1	100	2.0	2.7	6.5	14.2	33.4	41.2	•
2.2	100	2.5	3.5	7.8	14.5	36.9	34.8	
1.7	100	1.2	0.8	3.9	12.5	22.0	59.6	
2.0	100	1.4	2.5	5.4	14.3	32.8	43.6	
2.6	100	7.5	4.6	14.6	17.4	25.3	30.6	•

- -2005/2004

.2005

:

\*

-9

%51.2

934

2004/2003

118

%81.1

%55.4

%21.9

203

287

2005

84

39

164

6,790

27,310

%22.2

(2002 2000 1998)

23,268

104,975

6,681

27,273 (2003 2001 1999)

(%59.7) 365

611

2005

775

283

1,613

.%89.3

2640

2,502

%90.3

889

(9 ) .

%89.7

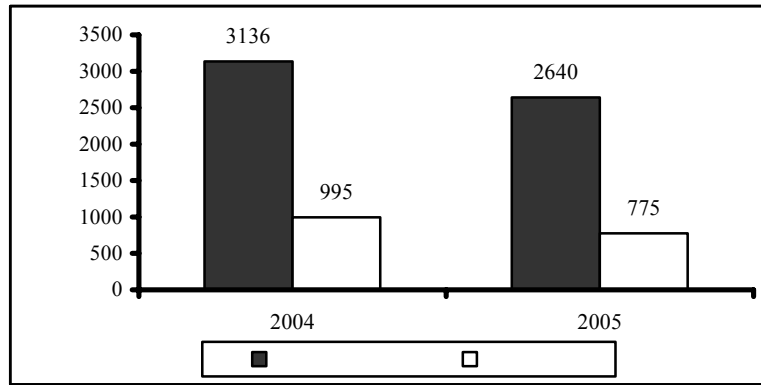
%47.3

%45.3

%45.1 %44.5

:9

.2005 2004



.2005

-10

2005

.2005

2005

1-10

2005

20

%.40.3

%41.7

%70.3 (

25

)

632

830

(%29.7)

572

6

60

591

%23.8

%22.7

2005 %12.3 %13  
 %19.5 %21.1

69.2 65.4 2005  
 61.5 53.8  
 134.6

.%13.1 %14.2  
 .%24.3 %24.7

**2-10**

) %40.7 %40.4 2004 2005  
 %42.5 . (2005 827 2004 790  
 .(2005 568 2004 549 ) %42.9  
 2005 %36.7 %36.4  
 (%46.6) (%47.5) 2005  
 (%39.3) %37.2

.2004 %59.6 ( 15) %59.3  
 %33.5 . %49.3  
 . %5.3 %11.9

**3-10**

453 633 2005  
 85 106 . 180  
 38 . 21  
 1000 27

%28.4 %61.7 2005  
 %9.9  
 2005 %9.9 2004 %8.7

				2005	%13.8	2004	%11.6
			.2005	%0.4	2004	%1.1	
			%90.1		567		
				%74.6		%25.4	
2005	%59.5	2004	%58.1				
%66.5			2005	%56.4	%55.1		
					.2005	%67.1	2004
		2005	%23.0	2004	%22.5		
				2005	%38.1	2004	%37.1
76		145				%16.9	
						69	
%68.8							
%69.3	2004	%71.5			2005	%67.1	2004
				%61.5	%61.8		2005
	2005		(		)		
)	%31.5			%49.5	%34.4		
				(			
%16.3			%20.8	%19.4			
%11.7			%17.1	%14.6			
141			26				
	2005			69		72	
			%38.1	%16.9		%23.0	
							%17.4

**4-10**

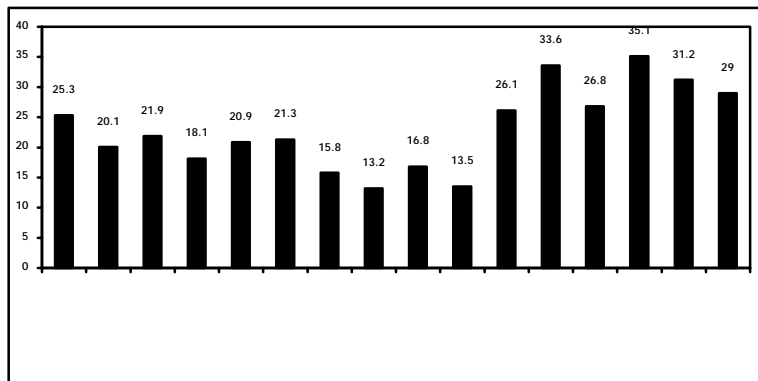
	63	64	2005		
	30		116	146	(2000 )

( )  
 ) 2005 %23.5 2004 %26.8  
 .( %22.3 %20.1 %23.7 %28.1  
 .%30.3 %35.4 %20.3 %22.9  
 . %23.7 %22.3

115) 194 2005  
 2004 18 ( 79  
 258 64

.(%13.2) (%26.1)  
 (10 )(%26.8) (%35.1)

2005 :10



.(2005 ) :

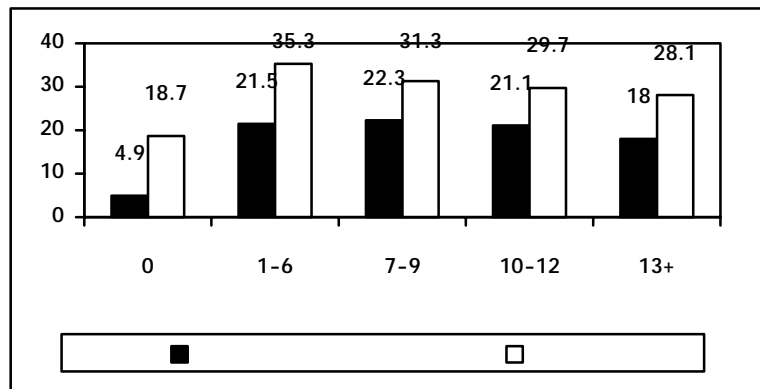
. %32.0 %45.8 2005 %36.4 24-15  
 %20.1 %26.1 34-25  
 %9.6 %12.1 55  
 . %18.8

(6-1)  
 %26.2 2005

%18.0 (%21.8) 13  
 .(11 ) . %28.1

:11

2005



(2005) :

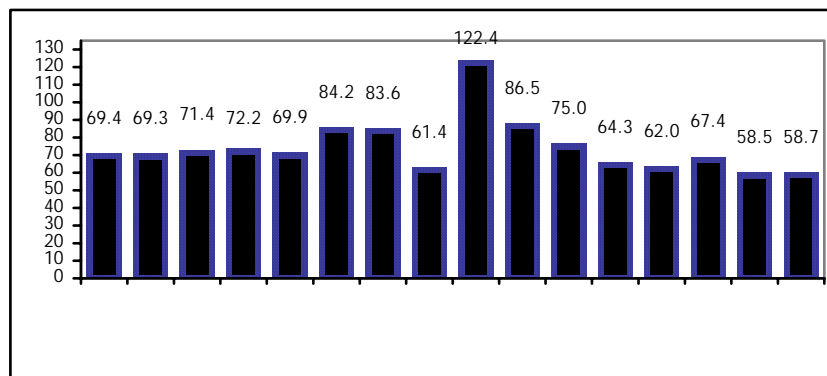
6-10

2004 2005  
 61.9 53.3  
 73.7 69.5  
 .2005 2004

2005  
 122.4  
 61.4  
 67.2  
 .(12 ) . 58.5

:12

2005



(2005) :

**7-10**

%13.4 %13.5

%9.0 %9.1

%15.8 %15.9

**8-10**

2005

%30

2006

(6 ) .

64

871

:6

**2006**

234	98	133	3	
246	99	120	27	
391	116	236	39	
871	313	489	69	

( )

:

7

%15

%58

%3.4

%23.2

:7

**2006**

234	4	51	162	17	
246	7	52	168	19	
391	19	99	176	97	
871	30	202	506	133	

( )

:

744

( )

8

%27

127

:8

2006

28	206	10	177	19	
45	201	17	165	19	
54	337	25	201	111	
127	744	52	543	149	
14.60%	85.40%	7.0%	73.0%	20%	

( )

:

( )

9

:9

2006

133	31	99	3	
506	218	245	43	
202	63	119	20	
30	1	26	3	
871	313	489	69	

( )

:

%60.3

%55.9

:10

2006

871	313	489	69	
744	242	449	53	
149	27	112	10	
543	193	314	36	
52	22	23	7	
127	71	40	16	

:

%46

%.16

%38

**-11**

**1-11**

.2005

2005

.2005

2004

.(

)

.(

)

.2004

2005

2004

2005

2004

%68.5

2005

%50.1

2200

%15.1

.2005

829.0 2005  
 .%50.1  
 .2000 %45.9  
 .( 203.7) ( 625.3)  
 . %200.4 %29.1 2004  
 %16.4 %83.6  
 %9.7 %90.3  
 .(11 ) .

:11

**2005 2004 2000**

( )			
2005	2004	2000	
829.0	552.2	568.2	
625.3	484.4	497.6	
523.0	362.8	367.9	
102.3	121.6	129.7	
203.7	67.8	70.6	
184.0	58.5	62.3	
19.7	9.3	8.3	

2005

**2-11**

.2004 2005  
 .2005  
 %20.2 2005  
 259.1 406.9 2004  
 .%25.1

%36.3

%12.4

147.8      2005  
(12      ) .2004

:12

**(2005 - 2003)**

(      )

116.2	173.8	289.9	2003
131.5	207.2	338.6	2004
147.8	259.1	406.9	2005

.2005

2

**3-11**

(      )

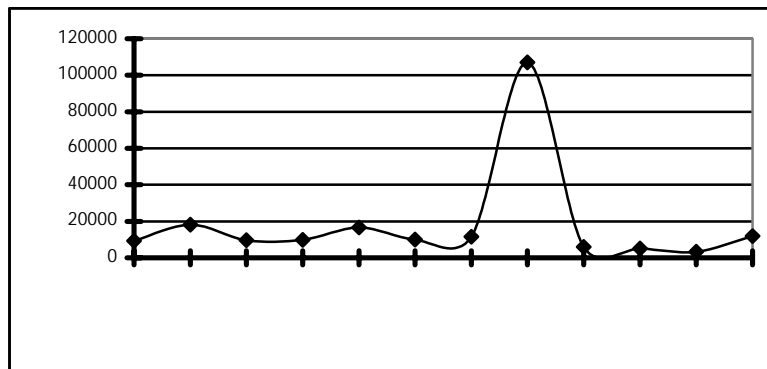
166      %18.6      2005

22.4      %83.6

(13      )      70      124.5

:13

**2005**



.2005

:

2

(%38)

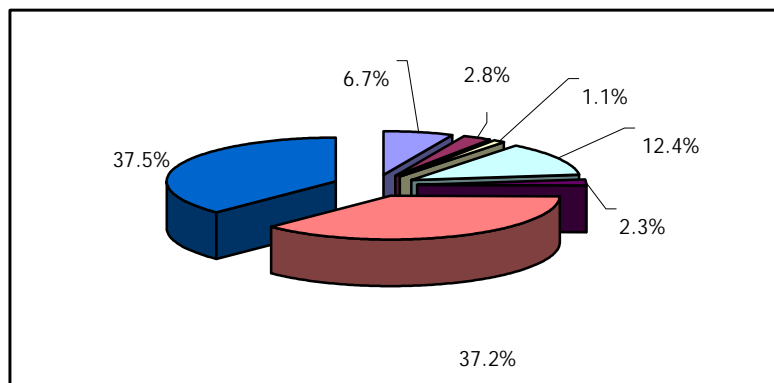
%89.4

%37

(14 ) .

:14

2005



.2005

:

3

-12

1-12

2005

2005

2005

%47.1

.2004

%90.7

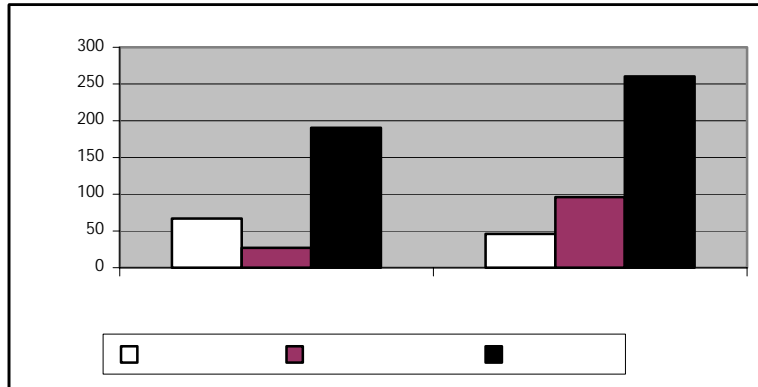
3

%52

142.5 93.7  
 96.3 2005 26.9  
 %23.9 %257.6 2005  
 (15 ).2005

:15

2005



:

64.8

2005

%.33.2

%27.3

427 2005

29

.2004

(13

).

316

82

:13

2005 2004

1562	615	195.93	171.07	580	2004
1989	931	166	230	662	2005

:

2-12

%11.4

53.4 2005

276.8

%7.6

) 2005

%6.6

.(2005

%5.12

53.1

56

"

"

9.3

15.7

2005

%5.7

%40.7

)

(

2005

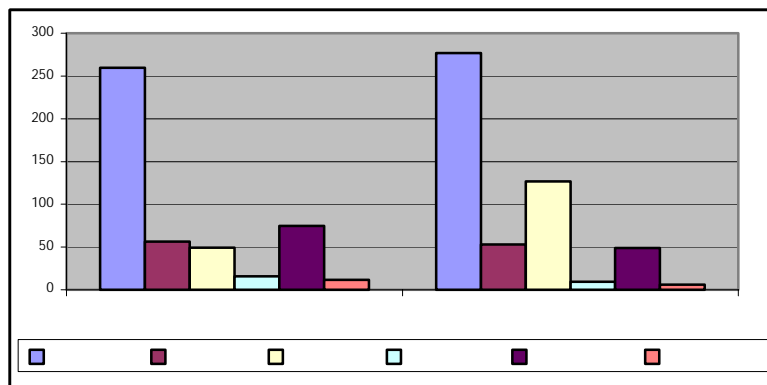
%5.7

25.8

(16 ) .

:16

2005



%26.4

465

2005

7

459

.2004

(14 ) .

:14

2005 2004

1764	261	145	18	270.32	195.68	874.21	2004
2230	268	130	25	625	244	938	2005

/ 3-12

193.8 2005 118.26  
 .2005 %38.47 2005

4-12

47.2 ( )  
 .%11.9 53.6 2005  
 0.86 -  
 15.5 26.3 4.6  
 146.15 2005 213.1  
 42.7  
 %78.4 9.2 2005  
 63.9 2005 159  
 .%59.8

75.14

%51.4 316 2005  
 (15 ) .2005 931 2004

:15

2005

%		2005		
2004	2005			
90.74	47.08	402.74	273.82	
44.38	52.01	142.49	93.74	
1.03	-30.83	46.22	66.82	
81.85	257.62	96.27	26.92	
131.43	33.15	260.27	195.47	
1919.42	305.46	-62.40	-15.39	
20.88	11.42	521.00	467.60	
21.14	12.96	514.97	455.89	
24.39	6.56	276.82	259.77	
18.97	7.58	164.16	152.60	
33.23	5.12	112.66	107.17	
15.17	-5.67	53.06	56.25	
31.44	156.83	126.72	49.34	

%		2005		
2004	2005			
29.76	-40.69	9.33	15.73	
-7.30	-34.44	49.04	74.80	
2.03	-48.51	6.03	11.71	
-46.96	-38.97	-118.26	-193.78	( )
-3.76	-27.50	193.41	266.71	
-31.22	-11.90	47.23	53.61	
10.50	-31.41	146.18	213.10	
-18.85	541.18	73.03	11.39	
-83.76	-78.41	9.22	42.71	
-100.00		0.00	0.00	
	-100.00	0.00	59.00	
	-36.08	63.92	100.00	
-441.39	3.03	75.14	72.93	( )

-13

1-13

2005

138

141 2005

2004

21 22

2005

.(16 ) 2005

141

135

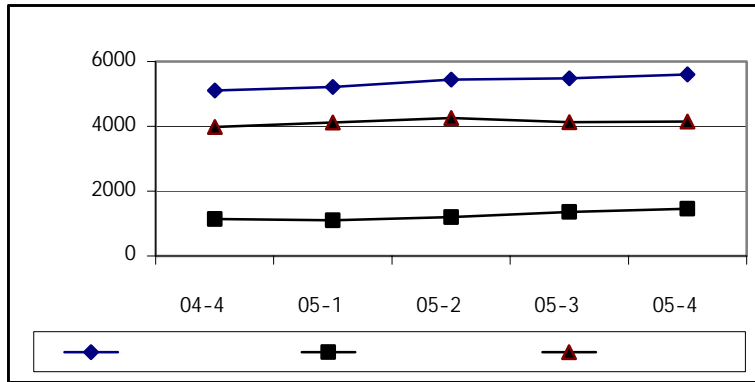
:16

97	56	41	19	11	8		2004
38	17	21	3	1	2		
135	73	62	22	12	10		
100	55	47	18	10	8		2005
41	15	24	3	1	2		
141	70	71	21	11	10		

2-13

118.1 2005  
 5601.4 / 2005 %2.2  
 1450.7 %7.1 95.7  
 4150.7 22.4 %0.5  
 2005 2004  
 .(17 ) 2004 487.8 %9.5

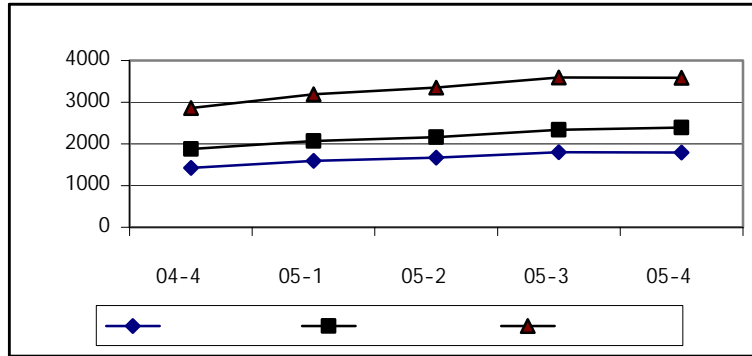
/ :17  
 05/4 - 04/4



3-13

%0.4 6.6 2005  
 %33.5 1791.8  
 %66.5 %11.8 601.1  
 2004 . %5.6  
 .(18 ) 364.2 %25.5 2005  
 592.2  
 .2005 %12.2 %33.1  
 %66.9 1199.6  
 .(17 ) 1160.2  
 2005  
 % 72.2 %70.1  
 %12 %12.5 %16.9 %16.8  
 .(17 ) %0.6

:18



2005

1154.3 %46.5

%64.4

%34.8

623.2

997.8

%0.2 %0.6

.(17 )

2005 -2004

:17

( )

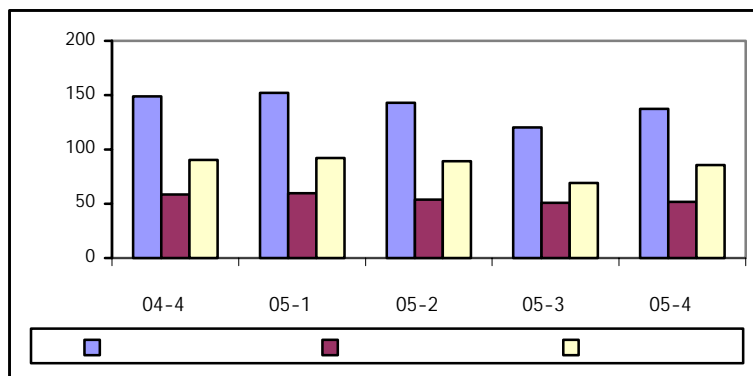
2005				2004				
4	3	2	1	4	3	2	1	
1191.1	1125.8	1069.4	1018.5	907.4	886.1	788.2	752.9	
600.7	672.6	603.8	574	520.3	444.2	463.2	417.4	
592.2	638.1	586.8	534.1	414.1	362.4	350.3	336.3	
1134.4	1100.1	1044	1003.2	969.7	930	865.5	800.3	
65.2	60.21	42.4	55.2	43.9	37.9	35.6	33.7	
1154.3	788.1	728.2	690	619.2	637.9	553.8	517.2	
623.2	997.8	931.4	890.2	795.5	680.1	682	638.5	
10.4	8.7	9	7.9	7.3	6.7	6.6	6.3	
3.9	3.8	4.6	4.4	5.7	5.6	9	8.3	
1256.7	1268	1200.3	1049.5	843.4	825.5	798.2	753.4	
224.3	216	197.8	182.1	174.2	174.8	168.8	153.3	
300.3	303.9	264.6	348.6	397.4	319.2	274.2	254.2	
10.5	10.5	10.5	12.3	12.7	10.8	10.2	9.4	
<b>1791.8</b>	<b>1798.4</b>	<b>1673.2</b>	<b>1592.5</b>	<b>1427.7</b>	<b>1330.3</b>	<b>1251.4</b>	<b>1170.3</b>	

%20.4  
 %8.2  
 %10.6  
 %6.7  
 %54.1  
 %1.4  
 137 2005  
 %42.4  
 %37.7  
 %10.5  
 %11.5 2005  
 137 2005  
 2004  
 11.8 %7.9  
 (.19 )

**4-13**

:19

**05/4 - 04/4**



5

**5-13**

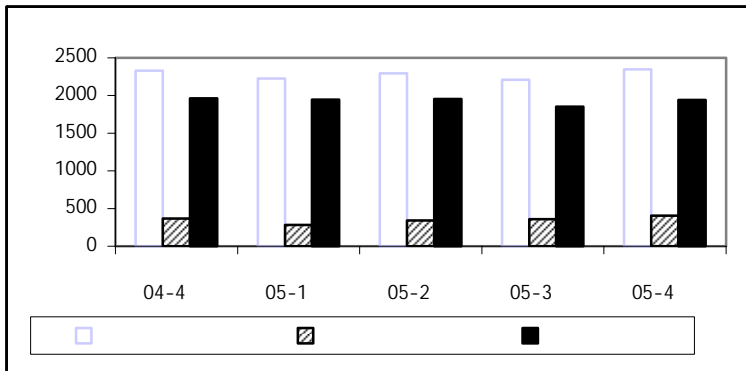
%6.2  
 2004  
 2347.5 2005  
 ( 2347.5 )  
 18.3  
 (.20 )  
 ( 2329.2 )

.%65

4  
5

05/4 - 04/4

:20

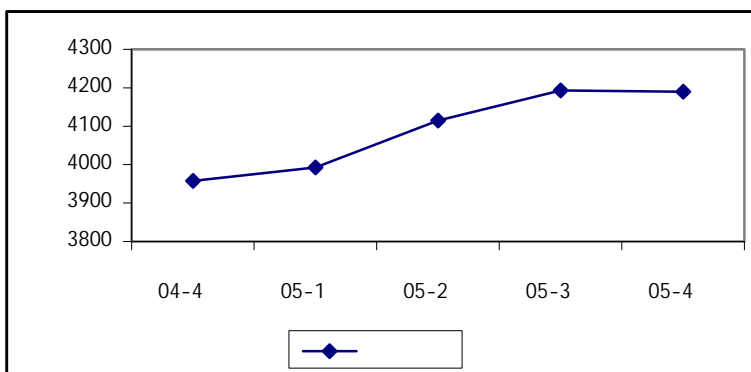


6-13

4612.5    %0.15    2005  
 %9<sup>6</sup>    %91  
 2004    %75.7    4605.8  
 .2004    262.8    %6    2005    %24.3

%78.7    %21.3    4190.2    %0.07  
 232.5    %5.9    2004  
 .(21 ) 2005

:21





%16.5 2005

572.7

.(20 )  
265.3 %86.3  
17.1

%62.9

116.7

2004

.2005

116.7

2004

(2005-2000)

:20

2005				2004	2003	2002	2001	2000	
4	3	2	1						
4.4	4.2	4.6	4.5	4.4	4.8	3.8	3.8	3	%
10.0	10.2	10.4	9.6	10.6	10.2	8.4	7.8	8.4	%
2.4	3.1	3.7	4.4	4	7.6	4.1	5	5.1	%
41.7	40.1	41.8	42.7	45.6	48	54.4	49.1	46.8	%
30.8	32.8	30.7	30.5	27.9	22.7	22.4	27.6	29.3	%
5.9	4.4	3.6	3	2.4	2.5	2.4	2	2.4	%
4.8	5.2	5.2	5.3	5.1	4.3	4.5	4.6	5.1	%
<b>100</b>	<b>100</b>	<b>100</b>	<b>100</b>	<b>100</b>	<b>100</b>	<b>100</b>	<b>100</b>	<b>100</b>	=
74.8	76.5	75.5	76.4	77.4	76.6	80.4	76.8	76.4	%
3.1	2.6	3.1	2.1	2.9	2.4	2.5	2	2.6	%
2.5	3	3.6	4.2	3.9	7.6	4.4	5.2	5	%
1.9	1.9	2.4	2.4	0.9	1.1	1.6	5.7	5.8	%
10.2	8.9	7.9	7.1	6	4.7	4.5	4.7	5.3	%
2.5	2.3	2.3	2.5	2.9	3	2.4	1.9	1.4	%
5.0	4.8	5.2	5.3	6	4.6	4.3	3.6	3.5	%



2005

%12.5

%11.2

%12 %10  
(21 ) .(%10.2 ) 2004

8 ✧

%6.7 %7.6 2005  
(21 ) 2004 3.7

✧

2005 2004  
%30.7 %33.2 2005

4.1 2004  
(21 )

✧

2003  
.2004 %36.9 2003 %29.6  
%42.9 %40.7 %39.9 2005  
. %40 .%42.8  
. %39.9 5.9 2004  
(21 ) .

**(2005-2000) :21**

2005				2004	2003	2002	2001	2000	
4	3	2	1						
11.2	12.5	12.9	10.9	10.2	9.1	11.3	11.6	12.9	/
7.6	6.7	8	8.9	11.3	13.4	10.9	6.9	4.5	% /
33.2	30.7	30.6	30	29.1	24.9	25.9	26.7	28.1	/
42.8	42.9	40.7	39.9	36.9	29.6	27.9	35.7	38.5	% /
50.9	47.8	49.4	50.1	53.5	55.4	61.3	54.7	52.3	% /

:

%65  
 %47.8 2005 % 50.9  
 .(21 ) %55.6 %36.2

**9-13**

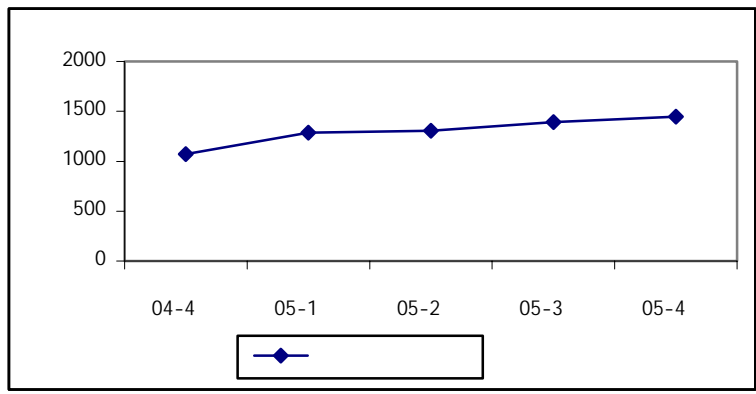
9

**1-9-13**

2005  
 %6.7 642,026  
 %3.9 1446.3  
 (22 ) . 2004

2004 2005  
 3949.6 2005 2,278,014 1,805,412  
 .2005 5379.7

**:22**



:

( ) 2-9-13

91,594 2005  
 %14.3  
 .(22 ) %13.3  
 %14.3

2004 2005  
 377.4 314 2005 310,841 254,640  
 .2005

:22

(05/4 - 04/4 )

/						
%	%	)	( )	)	( )	
		(		(		
9	16	97	78,118	1073.2	492,838	04
6.8	14	84	70,550	1233.7	492,608	05
6.1	13	79.7	68,583	1308.4	541,787	05
7.5	13	104.6	80,114	1391.4	601,593	05
7.6	14	109.2	91,594	1446.3	642,026	05

:

10-13

23

( )

2006/3/7 4.68

2005/11/29 4.65

4.63 4.64

.%1

( )

.2005 /11/29 %0.36

2006/3/7 %0.43

%3.27

%1.15 %1.57

%1.15

2006-3-7

(%)	(Pip)				
:					
0.43	20	0.02	4.71	4.69	1
0.43	20	0.02	4.72	4.70	2
0.43	20	0.02	4.7	4.68	3
0.43	20	0.02	4.71	4.69	
:					
0.43	20	0.02	4.71	4.69	( )
0.43	20	0.02	4.71	4.69	( )
0.43	20	0.02	4.71	4.69	( )
0.43	20	0.02	4.71	4.69	
:					
2.15	100	0.1	4.75	4.65	( )
0.43	20	0.02	4.72	4.7	( )
2.15	100	0.1	4.76	4.66	( )
1.57	73.3	0.073	4.74	4.67	
<b>0.81</b>	<b>37.8</b>	<b>0.04</b>	<b>4.72</b>	<b>4.68</b>	
:					
4.58	210	0.21	4.8	4.59	International bank of Israel
0.21	10	0.01	4.72	4.71	Union Bank of Israel
5.01	230	0.23	4.82	4.59	Bank leumi leisrael
<b>3.27</b>	<b>150</b>	<b>0.15</b>	<b>4.78</b>	<b>4.63</b>	

( ) :

6.61  
 .%1  
 .%1.9  
 %0.88  
 .%1.17      %7.69  
 2005/11/29      6.55      2006/3/7  
 6.55      6.42  
 %0.76  
 (24 )

.%2      2005/11/29      5.48      2006/3/7      5.59  
 .      5.47      5.55      %1.5

%1.16

%3.33

.2005/11/29

%1.12

%1.30

2006/3/7

(25 ) .

2006/3/7

:24

(%)	(Pip)				
:					
0.76	50	0.05	6.65	6.6	1
0.45	30	0.03	6.65	6.62	2
0.45	30	0.03	6.65	6.62	3
0.55	36.67	0.04	6.65	6.61	
:					
0.76	50	0.05	6.67	6.62	( )
0.76	50	0.05	6.65	6.6	( )
0.30	20	0.02	6.65	6.63	( )
0.6	40	0.04	6.66	6.62	
:					
1.52	100	0.1	6.68	6.58	( )
1.21	80	0.08	6.7	6.62	( )
1.67	110	0.11	6.69	6.58	( )
1.47	96.67	0.10	6.69	6.59	
<b>0.88</b>	<b>57.78</b>	<b>0.06</b>	<b>6.67</b>	<b>6.61</b>	
:					
14.9	930	0.93	7.16	6.23	International Bank of Israel
0.2	10	0.01	6.66	6.65	Union Bank of Israel
8.0	510	0.51	6.9	6.39	Bank Leumi le Israel
<b>7.69</b>	<b>483.33</b>	<b>0.48</b>	<b>6.91</b>	<b>6.42</b>	

( )

:

2006/3/7

:25

<sup>10</sup> (%)	(Pip)				
:					
1.08	60	0.06	5.63	5.57	1
0.72	40	0.04	5.62	5.58	2
0.18	10	0.01	5.66	5.65	3
0.66	36.67	0.04	5.64	5.60	
:					
0.72	40	0.04	5.6	5.56	( )
1.79	100	0.1	5.7	5.6	( )
0.89	50	0.05	5.65	5.6	( )
1.13	63.33	0.06	5.65	5.59	
:					
2.88	160	0.16	5.71	5.55	( )
1.25	70	0.07	5.66	5.59	( )
2.15	120	0.12	5.69	5.57	( )
2.10	116.67	0.12	5.69	5.57	
<b>1.30</b>	<b>72.22</b>	<b>0.07</b>	<b>5.66</b>	<b>5.59</b>	
:					
4.52	250	0.25	5.78	5.53	International Bank of Israel
0.18	10	0.01	5.64	5.63	Union Bank of Israel
5.29	290	0.29	5.77	5.48	Bank leumi le Israel
<b>3.33</b>	<b>183.33</b>	<b>0.18</b>	<b>5.73</b>	<b>5.55</b>	

( )

:

-14

2006

2005

( ) 2006

(%) <sup>10</sup>

2006

2006/3/21 2006/3/22

%3 %5

28 25

2006 22

2005 2006 %38.7

%38.5 503.4

%31.8 3 70

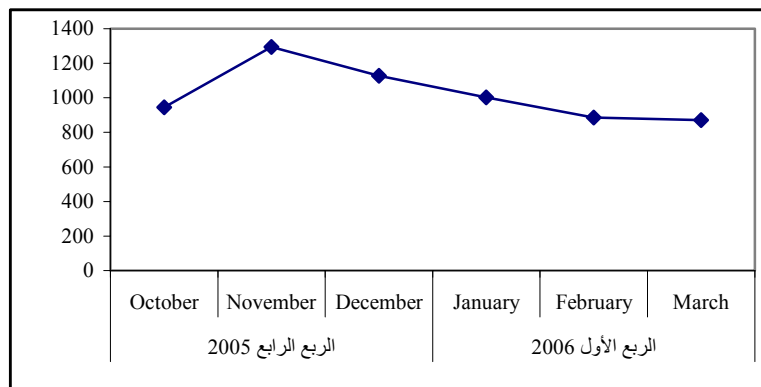
%33.4 43259 64958

57 2005

1128.59 2005 %22.8 871.54

2006 :23

2005



www.p-s-e.com .

2005 2004 2005

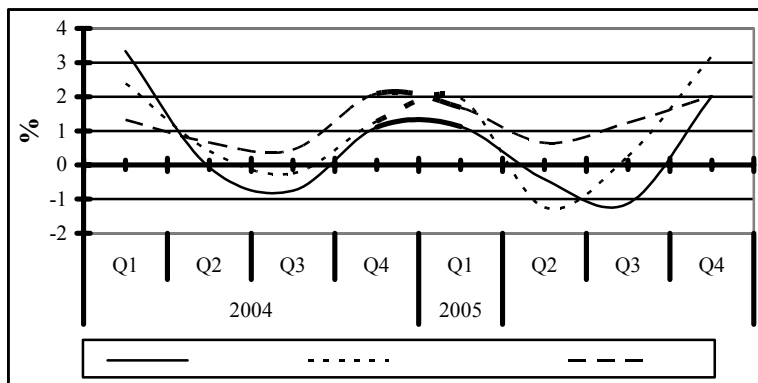
%306 2004 277.56 1128.59

% 146.6 2 2005

		811			
	2004	103	369	2005	
	4.4				%258
(23	)	2004	2004		1.09
	.2004	% 303.7			
(CDS)	(Trading)		2006		
			2006/01/15		
					.1
			CDS		.2
			)		
			(		
					.3
					.4
					.5
		(Held)			.6
					.7
	(CDS)				.8
	CDS	(Clearing)			

.2005 %2.41  
 %4.88  
 %1.99 %2 %3.49  
 %1.39  
 %0.63 %0.77 %0.78 %0.92  
 .2005 %0.78  
 %3.19  
 %5.49  
 %4.20 %2.02  
 %2.59  
 %2.02 %1.38 %2.37  
 %60 2005  
 %2.37 %4.20  
 ( )  
 ) 2005 2005 %3.57  
 ) %1.73 ( )  
 ) 2005 %0.6 ( )  
 %0.54 ( )  
 2005 %2.34  
 (24 ). %2.97  
 :24

**2005-2004**



2005

2004                      2005                      %3.47  
                                  141.86                      146.79                      (100=1996                      )  
                                  .2003                      %3                      2004  
 %5.30                                           %5.6  
 %3.15                                           %3.77                                           %4.23  
                                  %2.60                                           %2.85  
                                                       %1.07                                           %1.63  
                                                       .2005                                           %1.40

% 4.68                                           %1.11  
                                                       %12.09                                           %4  
                                                       .2005                                           %9.03

**1-15**

                                 2005  
                                                       .(26                      )                                           %2.48                      %2.83  
 %0.42                                           .%0.72                                           %0.36                                           .                                           %0.06  
                                                       .                      %0.45                                           %0.81  
                                                       2005  
                                                       %0.14                      %0.16  
                                  .(27                      )                      %3.33                      %3.31                                           .%3.47

**:26**

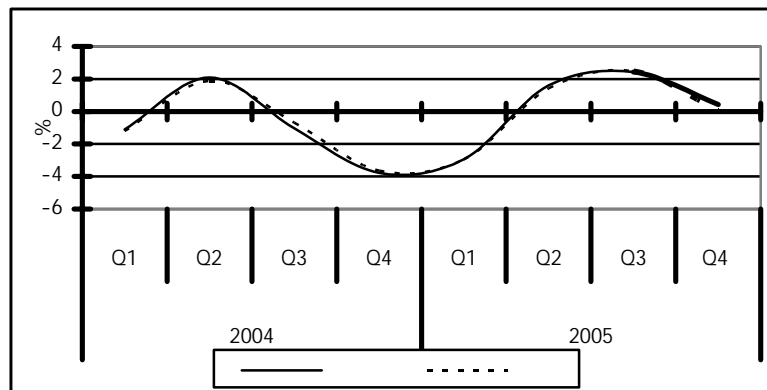
**2005**

6.28	4.46	Q1 2004
6.40	4.55	Q2 2004
6.35	4.50	Q3 2004
6.22	4.40	Q4 2004
6.15	4.35	Q1 2005
6.21	4.40	Q2 2005
6.39	4.53	Q3 2005
6.55	4.66	Q4 2005
<b>6.31</b>	<b>4.48</b>	<b>2004</b>
<b>6.32</b>	<b>4.49</b>	<b>2005</b>

:27

2005	2004	Q4 2005	Q3 2005	Q2 2005	Q1 2005	Q4 2004	Q3 2004	Q2 2004	Q1 2004		
-3.31	-1.01	0.42	2.42	1.60	-2.93	-3.79	-1.02	2.09	-1.10		
-3.33	-1.07	0.06	2.48	1.4	-2.95	-3.65	-0.69	1.88	-1.21		
-2.73	-1.21	-0.36	2.57	2.39	-3.01	-3.58	-0.78	1.68	-1.16		
-2.75	-1.27	-0.72	2.63	2.18	-3.04	-3.44	-0.45	1.47	-1.27		
-5.18	-1.75	0.81	1.59	0.5	-2.74	-4.39	-1.47	1.42	-0.95		
-5.20	-1.81	0.45	1.64	0.29	-2.76	-4.26	-1.14	1.22	-1.06		
-1.01	-1.37	0.81	3.95	1.57	-2.19	-3.4	-0.28	2.15	-1.99		
-1.03	-1.44	0.07	4.01	1.36	-2.21	-3.27	0.05	1.95	-2.1		

:25



2-15

2005

28

2005

:28

87.63	83.99	88.58	25	- -
2	2.99	3.13	1	
46.21	41.12	50.13	1	
31.03	33.62	37.63	1	
7.87	9.69	12.6	1	
81.35	81.95	95.83	2.5	( )
5	3.5	3.54	500	( )
9.96	12.04	14.16	2	
20.71	19.03	25.75	1	
1.26	2.27	2.83	1	
3.75	6.38	9.36	1	
2.78	4.44	6.79	1	
4.19	4.97	6.67	1	( )
5	4.95	6.46	1	
9	9.19	10	1/2	( )
28.58	30.85	46.96	1	( )
9	9	9.23	20	( )
39.04	39.20	55.42	12	
25.42	32.93	30		
25	32	40		
60	60.11	103.75		( )

2005

:

:

2005

◇

◇

.(tradable goods-

.(non-tradable goods - )

25

32

40

◇

3.5

5

500

20.71  
19.03

**-16**

) %52.5 %32.2 %36.7 -( )  
 2006 %26.7 (2006  
 %14.3) %17.9  
 2006 %13.7 ( %30.0  
 %26.3) %26.0  
 2006 %27.5 ( %25.1  
 -( ) -  
 ( %71.7 %34.5) %42.8  
 %59.0 2006  
 ( %43.3 %17.9) %23.5  
 %38.8 %31.1 %32.8  
 .2006 %30.3 %31.8  
 (29 )

**:29**

**2006**

71.7	34.5	42.8	52.5	32.2	36.7	
43.3	17.9	23.5	30.0	14.3	17.9	
38.8	31.1	32.8	25.1	26.3	26.0	

.2006

/

:

%10.4

%44.8

%11.9  
 %36.6  
 %6.0  
 %11.8  
 %4.3) 2006  
 %22.4  
 %23.7  
 %4.5  
 2006  
 .2006 %4.2  
 .2006  
 %23.9  
 %57.5  
 %41.4 /  
 %28.5  
 %34.5  
 %19.4  
 %15.6  
 %71.7  
 %15.6  
 %12.6

**-17**

**1-17**

.2006/2005  
 (26 ) 1.08  
 .2005/2004 %3.3

.2006/2005

1078.5

1995/1994

617.9

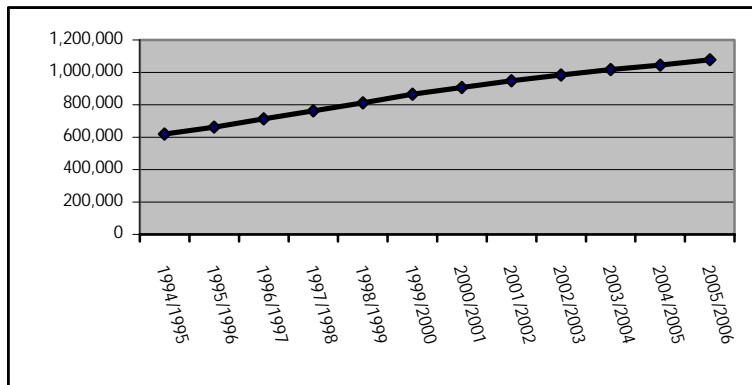
2006/2005

41,8

.(30 )

34,5

:26



:30

**2006/2005-1995/ 1994**

(%)	( )		
		617,868	1994/1995
7.2	44,759	662,627	1995/1996
7.6	50,193	712,820	1996/1997
7.1	50,647	763,467	1997/1998
6.5	49,255	812,722	1998/1999
6.5	52,818	865,540	1999/2000
4.8	41,588	907,128	2000/2001
4.4	40,171	947,299	2001/2002
3.9	36,809	984,108	2002/2003
3.4	33,335	1,017,443	2003/2004
2.6	26,492	1,043,935	2004/2005
3.3	34,553	1,078,488	2005/2006

%70

%.6

%24

%70 1995/1994 %67.8

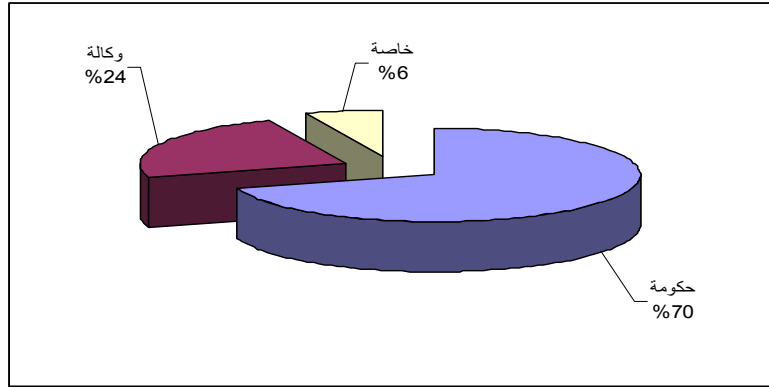
%24 %26.1

2006/2005

(26 ) .

2006/2005

:27



.2006

.2006/2005

(%50.2) (%50.4) (%50.3)  
 %40) .( %60

19843

2005/2004

38805

1995/1994

2006/2005

48674

35013

( 35.3) 2006/2005

.( 35.6)

37.1

.1995/1994

(31 ) 2006/2005

31.4

1995/1994

30.2

31.1

.2005/2004

26.8

1995/1994

:31

31.1	30.2	37.1	617,868	1474	1995/1994
30.7	30.4	37.5	662,627	1470	1996/1995
29.8	29.9	37.3	712,820	1532	1997/1996
29.2	29.8	37.2	763,467	1611	1998/1997
29.5	30.2	37.2	812,722	1691	1999/1998
29.4	30.3	37.5	865,540	1767	2000/1999
27.7	30.2	37.3	907,128	1835	2001/2000
28.1	30.6	37.1	947,299	1918	2002/2001
27.8	30.6	36.7	984,108	2006	2003/2002
27.3	30.4	36.1	1,017,443	2109	2004/2003
26.8	30.6	35.6	1,043,935	2192	2004/2005
*	31.4	35.3	1,078,488	2276	2005/2006

.2006/2005

.2006

.2005/6/15

2006/2005

\*

-1997/1996

%4.5

84

(27 )

2006/2005

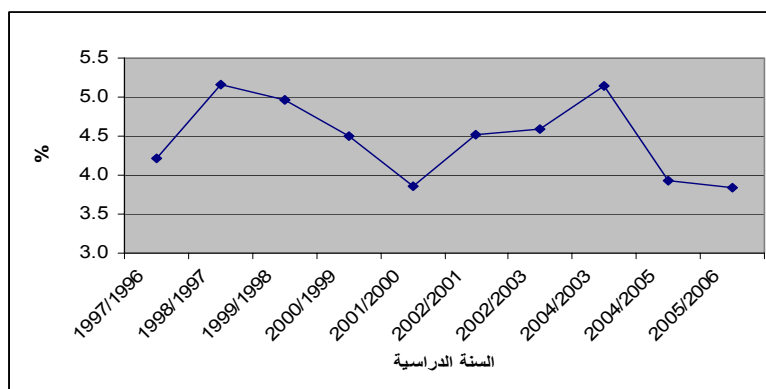
%3.8

2006/2005

(32 )

2006/2005-1997/1996

:28



.2006

.2006/2005

11

15 473

%49 %22.8

15 %14.5 296

%31) 91.4 %63 ( %53) 140.9

48.2 %54 (

(15.5) %64

%28 ( %55)

%36 %49 %17

2006 ) %14

(

(%80) (32)

%89

%76.9 %76.5

(%25)

2005

:32

83.4	89.2	76.9	76.5	
25.2	22.1	26.4	34.8	
6.0	5.3	5.2	11.1	
8.7	5.0	11.9	19.3	
1.3	1.1	1.1	2.4	
84.0	88.6	81.8	67.2	
91.7	100.5	81.2	64.7	( ) (

)

.2006

:

(2006

-2005

27

16

1987

%28.6 %82.4)

.(

**3-17**

2005

)

427

84

216

300 (

( )

.(2004

62

2005

174) 2004

)

2004

"

2005

(

)"

%97

.(

%60

%79

5

2004

14

2004

5

%10

31

(33)

%70

%20

%81

244,530

31

%29

%71

:33

**2005**

174	52	122	
5	1	4	
14	7	7	
31	11	20	
31	8	23	
45	5	40	
300	84	216	

2006

- .2005 -

5 21 45

22

%76 (%98)

-18

.(%75.6)

4281

.(34 )

80

22

%57

:34

2005

	( )				
405	33	0	0	372	
1288	15	0	0	1273	
1122	15	35	41	1031	
740	183	53	413	91	/
10	7	0	0	3	
25	0	0	0	25	
61	3	0	0	58	
403	1	0	140	262	
35	12	1	22	0	
36	11	0	0	25	
1	1	0	0	0	
8	1	0	0	7	
144	53	0	0	91	
4281	338	89	616	3238	

.2006

-2005

(<sup>12</sup> ) :35  
 ( ) 2004

%		
44.6	425,504,116	
12.4	118,598,047	( )
12.7	120,996,767	
30.2	288,148,577	
100	953,247,507	

.2006 :  
 -2005

(36 )

( ) 2004 221  
 61 %5.3

:36

2004

%	
24.5	( )
42.3	
11.8	( )
21.4	
100	

.2006 :  
 -2005

1-18

<sup>13</sup> 26902 2005

.(%41)

( 35)

7341

7636

7102

6390

%27)

%41

(37 ) .( )

%6

(%26

:37

**2005**

	**	**	* ( )	*	
5347	1931	1245	154	2017	
1579	1192	179	29	179	
4960	900	522			
2643	684	1737	496	3042	
567	83	143	0	222	
513	60	107	5	341	
104	0	0	0	104	
2843	768	664	197	1214	
8432	1934	1622	871	4005	
255	84	171	0	0	
<b>26902</b>	<b>7636</b>	<b>6390</b>	<b>1752</b>	<b>11124</b>	

-2005

.2006

:

.2004

\*  
\*\*

**-19**

**1-19**

.2005

(38 )

.2005

2005

:38

28	15	77	2005
23	22	70	2005
-	147	442	2005
-	101	684	2005

24  
2005

13  
(2005/12-10

) 2004

287 2005

2005 (39

2004

88

2005/2004

:39

2005	2004	
287	946	
81	219	
60	111	
1664	6000	
420	2000	

.2005 2004

2-19

2005

870

1450

.2005

.2005

(40 ).

:40

2005

53.5	46.9	41.7	44.7	45.7	45.4	
30.6	28.3	40.7	42.0	37.3	37.7	
-	3.4	42.7	47.7	28.3	34.0	
26.4	25.2	25.6	33.8	25.9	31.2	
23.8	25.6	21.1	25.8	22.0	25.8	
-	-	10.0	17.7	6.7	12.2	

.2006

:

. (2005 - ) 15 :

:

.2005

. (2005 - ) 14

8800

. 115 350 .

30

2005

555

369

. 186

2005

. 6206

115

400

18

7

350

3500

%99

%3.5

2006

40000

"

"

)

(32) 2005

.(2005

.206

### 5-19

2005

.(

)

(

)

.( )

1967

.<sup>15</sup>

<sup>14</sup>2005

:

◇

194

2004

101

2003

76

.2005

%42.3

:

◇

%42

571

.2006

<sup>14</sup>

149

2675

<sup>15</sup>

. %10.1 (1967 5 )  
 - ) 38 50  
 .( :2005 -  
 %3.2 : ✧  
 %69 .  
 %80  
 %42 : ✧  
 %42  
 %31  
 %91 : ✧  
 %86  
 %81  
 : ✧  
 %80  
 %85  
 %65  
 %49 : ✧  
 %24  
 %12  
 %9  
 %22  
 %50  
 %7 %13  
 %10  
 : ✧  
 %54  
 %57  
 %53

-20

1-20

2005

2004 2005

2006

(2006-3-28)

2006

(41 ) .

2004

2005

2005 2004

15

2004

2005  
.2004

2004 3  
2005

:41

/	/
<b>2</b>	
2006/1/21	
2006/4/20	
<b>3</b>	
2006/1/2	
2006/1/15	
2006/2/14	
<b>1</b>	
2006/1/8	98 (1)

:

" " **2-20**

2005

35

438

122

33

39

.2005

<b>2005</b>			
		645	-
4785	7628		71470
			.2005

		12				-
					1125	
		43				316
		844				
			4809			
1355290			76867			-
14749				756		770
403				15265	12132	
		16195			207	
						16
2001	( )			753		-
					3817	33153
						-
		417		243866	2003	( )

-21

		.2005				
				%51.6		
	2005		.(	%64.0		%45.6)
		%57.4				
2005		%57.0				
				. <sup>16</sup> 2005		%58.3
.2005				%47.8		
						42
						. <sup>17</sup> 2005
	2005					
				.2006		
			:			

2005

:42

52.2	45.6	47.8	(%)
(%) ( ) :			
89.0	76.2	93.6	
91.0	85.3	80.9	
78.9	76.6	77.4	
69.9	54.0	59.8	
61.4	44.6	50.8	

.2006

:

(2005 - ) 15 :

( %91.0 ) %93.1  
 ( %84.6 %70.5 ) %76.2 ( %96.2  
 .2005

(43 )

2005

2005

:43

2005

<b>2005</b>	<b>2005</b>	
(%)		
29.5	24.0	
24.6	17.6	
39.2	37.8	
(%)		
14.2	14.5	
15.7	16.2	
11.3	10.9	

.2006

:

(2005 - ) 15 :

(2005 - ) 14

2005  
 %48.8                      %48.0                      %63.5                      (%87.9)  
    %17.8     %24.3  
    %20.3

**1-21**

(44 )

**2005-2004 :44**

2005	2004	
51.6	55.3	(%)
47.8	58.2	(%)
29.5	22.2	(%)
14.2	15.1	(%)

14 .(2005 - ) 15 : .2006  
 . (2005 - )

**2-21**

2005  
 (45) .( 28.2 27.2)  
 (%67.0)

**:45**

**(%) 2005**

55.2	16.1	28.2	
54.7	13.2	27.2	

15 : .2006  
 .(2005 - ) 14 .(2005 - )

42			104
87	18	2005	.
100			38
	2005		%17
2005	50		.(16.7) 2005
			(%55.4)
2005			
	%.61.2		%65.1
		%18	%24.2
			( )
	%14		%70.4
	%85.1		%50.9
			%38.7
			%58.4
%8.1		%11.6	%15.6
			%4.4
			%.1.9
	( )		
( 104)			125
( 50)			( 61)
( 21)			.( 42)
	.( 31)		( 27)
			2004
42	2004	22	
	104	67	
			2005
			(46 ) .

**2005-2004**

2005	2004	
67.0	67.5	(%)
27.2	22.0	(%)
65.1	56.1	(%)
104	67	(%)
42	22	(%)

.2006 :  
 (2005 - ) 15 :  
 . - .(2004 - ) 11

**3-21**

2005  
 .( %45.3 ) %37.1  
 %20.2 %19.1  
 . %21.3 %15.2  
 .( %5.2 %5.4)  
 %40.6  
 %16.7 %22.3  
 %30.6 .  
 %16.3 %29.8  
 .

